

ACCESSORIES



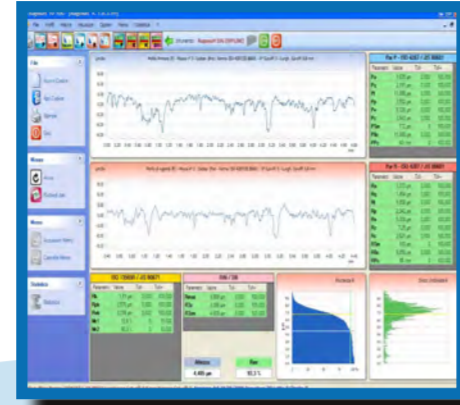
Granite stand ST2

Granit stand 630x400 and column for the positioning. Maximum measurable height, referred to the measurement plane: h250mm.



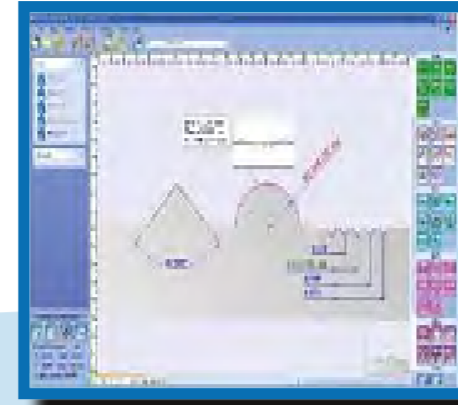
Printer PR11

Thermal printer, 24 column, for printing parameters and graphics.



Software MS full

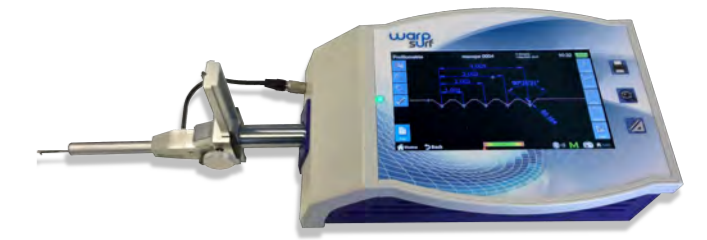
Software Measurement Studio Full, for downloading measurements and profiles, store them and do the statistics. It is possible to print custom reports.



Software Profile Studio

The software Profile Studio extends the functionality of the warpsurf profilometry.

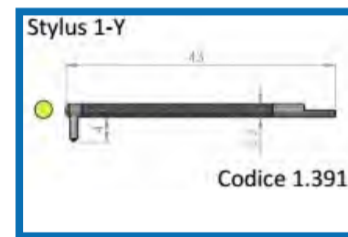
SM Metrology Systems



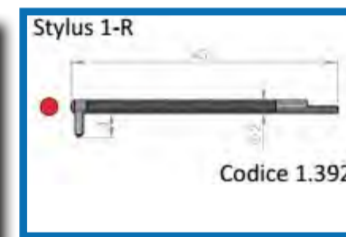
warpsurf



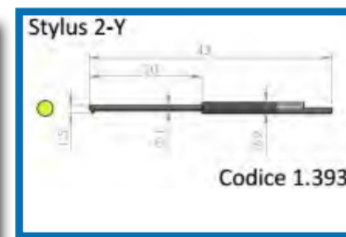
PROBES



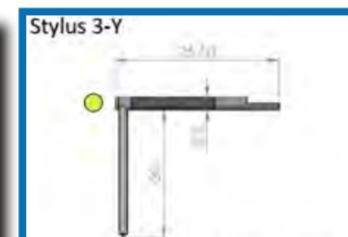
1 - Y - Interchangeable stylus with 90° diamond - 2 µm
Range of measure 3 mm



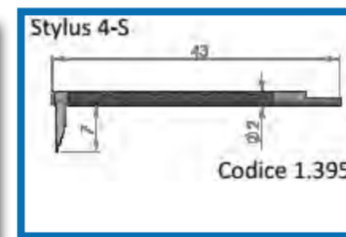
1 - R - Interchangeable stylus with 60° diamond - 2 µm
Range of measure 3 mm



2 - Y - Interchangeable stylus for little hole, minimum 2 mm with 90° diamond - 2 µm



3 - Y - Interchangeable stylus for deep gorges (max 20 mm) with 90° diamond - 2 µm



4 - S - Interchangeable stylus for profile, with hard metal chisel. Range of measure 3 mm

Portable roughness tester

TECHNICAL DATA	
Display	7 inches (18 cm) touch screen with 16 million colors
Measure range	X= 60 mm Z =3 mm (roughness probe) Z = 3 mm (profile probe)
Resolution	0,1 nm (0,0001 µm) of 3 mm
Printer	- Commercial desktop printer via USB - PR11 printer via Bluetooth direct - PDF creation on a USB stick
Micrometric positioning	-10 mm to 110 mm with the fine provided
Roughness	Ra, Rq, Rt, Rz, Rp, Rv, Rc, Rsk, Rku, RSm, Rdq, Rda, Rmax, Rdc, Rmr, Rpc, RLo, Rlr, Rzjis, RHSC PA, Pq, Pt, Pv, Pc, Psk, Pku, PSm, Pdq, Ppc, PLo, Plr, PHSC Wa, Wq, Wt, Wz, Wp, Wv, Wc, Wsk, Wku, WSm, Wdq, Wdc, Wpc, Wlr, WHSC Rk, RPk, RVk, Mr1, Mr2, A1, A2, WDSm, WDC, WDt R, AR, Rx, W, Aw, Wx, Wte, Rke, Mr1e, Mr2e, A1e, A2e
Profile analysis	CAD integrated for the analysis of the profile
Archive	- Automatic saving of the last 6 measures - Saving up to 1000 measurements (more graphics parameters)
Database	- Possibilità di archiviare le misure secondo la filosofia dei codici, sessioni, operatori - Possibilità di eseguire l'analisi statistica dei dati nel database
Connectivity	- 1 USB Type A port (connection to USB pens) - 1 USB Type B port (connection to PC) - Bluetooth connection to the printer PR10



www.sm-instruments.com





Roughness and profile within reach of a finger!

Interchangeability

Probe with interchangeable stylus by means of a plug-in connector

Clarity

Wide 7" LCD TFT display with 16 million colors

Connectivity

USB interface for connection with PC equipped with Measurement Studio software or Profile Studio software, or to desktop printers. Bluetooth interface for connection with the PR-11 printer

Adaptability

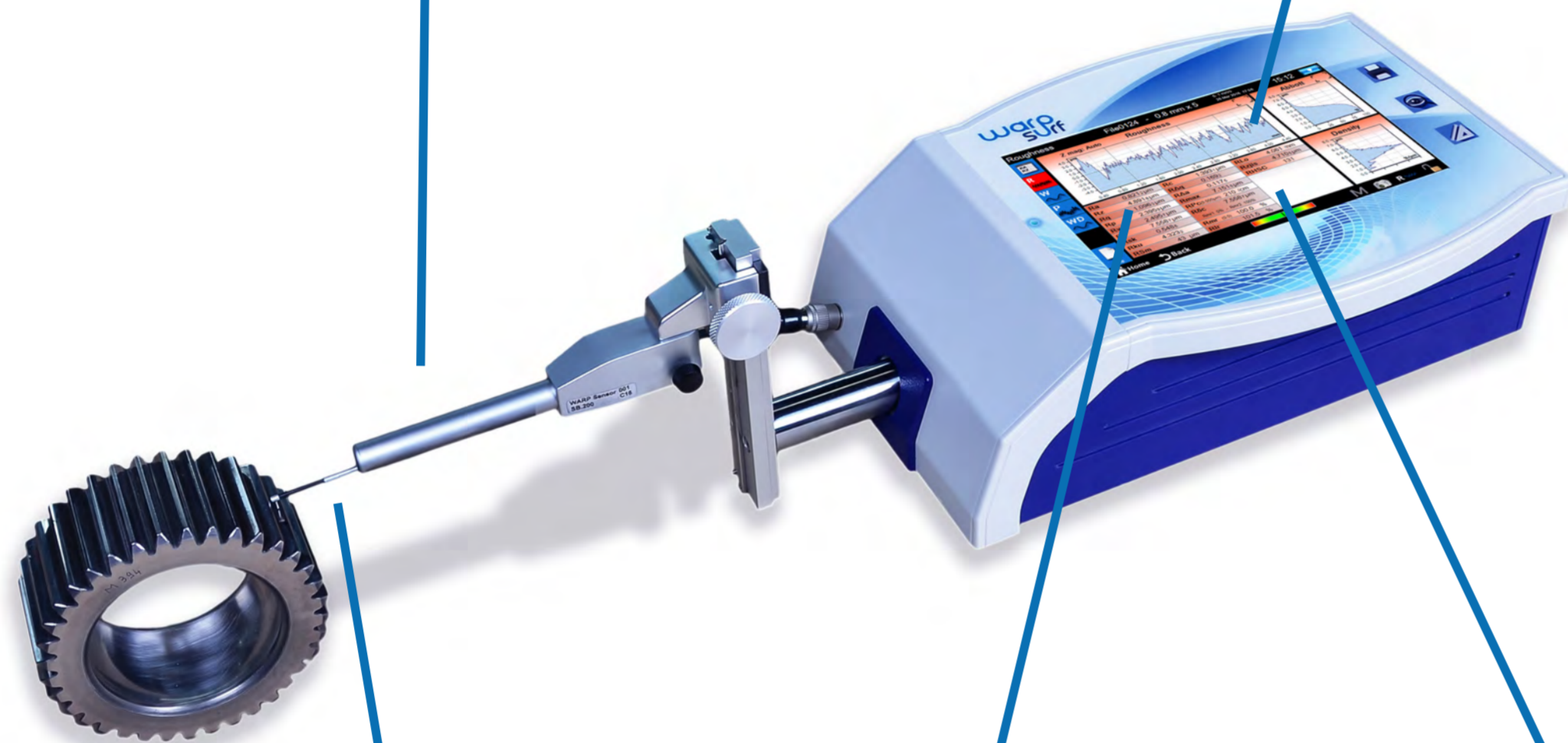
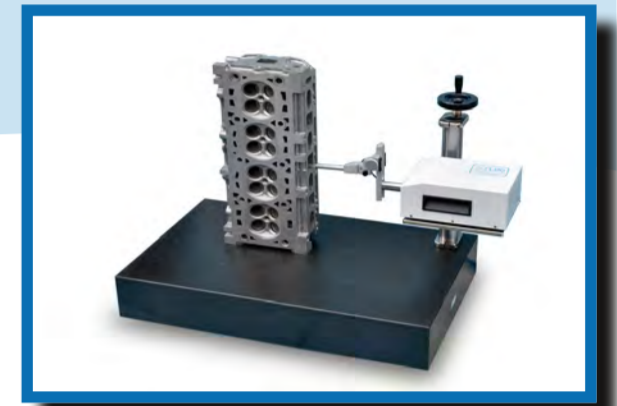
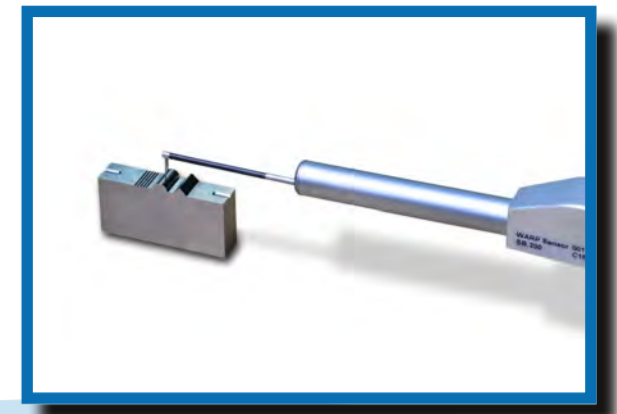
Up to 1.5 mm of useful field with a resolution of 1 nm

Versatility

Analysis and evaluation of the roughness of the shape of the profile all in a single working environment

Easy to use

Control via graphical menu, based on touchscreen icons



Warp surf

The roughness Warp surf is characterized by great handling and extreme ease of use. The wide range of colors TFT 7 "with touch screen technology allows the operator to interact with the surface roughness in an intuitive and easily display the parameters and graphics of roughness and the characteristics of the shape of the profile. The instrument allows to measure surface roughness directly at the production site and is able to calculate a total of 75 roughness parameters provided by ISO 4287 / JIS B0601, ISO 12085 (MOTIF / CNOMO) / JIS B0621 and DIN standards, as well as It effects the characterization of the profile detected by using a convenient CAD that provides a complete set of functions.

