

Accessories for Talyrond 385 series instruments

All the accessories you need to begin using Taylor Hobson roundness measuring systems are supplied as standard. However, for more demanding requirements or improved measurement throughput, we have a range of accessories which may be ordered separately.

1 Small Computer Desk

900mm [L] x 850mm [W] x 750mm [H]
(35.5 x 33.5 x 29.5in). Purpose designed cabinet with optimized heat dissipation and cable management.
code 112-3350 Standard

Precision Collet Chuck - Fixed

(for use with automated tables only)
Note: Collet required - see list below.
code 112/3549

2 Precision Collet Chuck - Removable

Three ball type location (for use with manual or automated tables)
Note: Collet required - see list below.
code 112/3662

112/3554-1.0	1mm Collet
112/3554-1.5	1.5mm Collet
112/3554-2.0	2mm Collet
112/3554-2.5	2.5mm Collet
112/3554-3.0	3mm Collet
112/3554-3.5	3.5mm Collet
112/3554-4.0	4mm Collet
112/3554-4.5	4.5mm Collet
112/3554-5.0	5mm Collet
112/3554-5.5	5.5mm Collet
112/3554-6.0	6mm Collet
112/3554-6.5	6.5mm Collet
112/3554-7.0	7mm Collet
112/3554-7.5	7.5mm Collet
112/3554-8.0	8mm Collet

112/3555 Adjustable End Stop

Recommended for use with 112/3549 or 112/3662; may require modification to suit the component under test.

3 Six jaw component chuck

A 6 jaw precision scroll chuck.
Capacity - Inside diameter
20mm - 95mm (0.78in - 3.74in).
Capacity - Outside diameter
2mm - 32mm (0.08in - 1.26in).
code 112/1859 Optional

4 Standard Stylus Arms

Ruby ball x 100mm (3.9in)
1mm (0.039in), code 112/3245
2mm (0.078in), code 112/3244
4mm (0.157in), code 112/3243

Bar Stylus

A 100mm (3.9in) stylus for measuring small diameter components.
code 112/3489 Optional

Diamond styli

Conisphere stylus with 90° included angle; required for cylindrical mapping or surface finish applications.
code 112/3806 Optional 5µm Rad
code 112/3807 Optional 10µm Rad

Optical trigger

Recommended for piston measurement and piston analysis software.
code 155/P52725

Kinematic Dowel Support Set

For stable workpiece mounting.
code 112/1861 Standard

5 Reservoir assembly kit

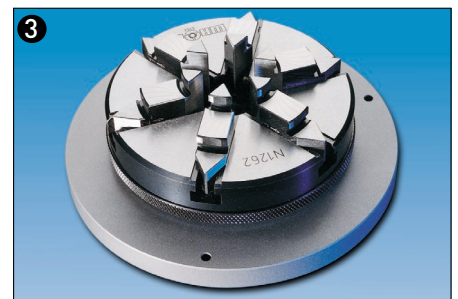
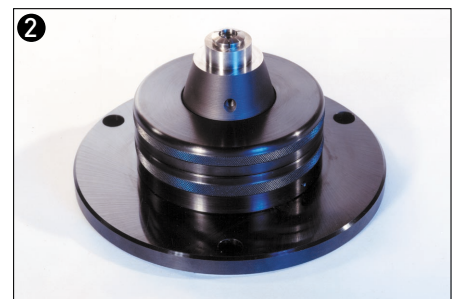
If the air supply is unreliable or of poor quality then the reservoir assembly is recommended to provide an even flow of air to the spindle.
code 112/2869 Optional

Force Setting Gauge

Recommended with diamond styli and where specific stylus forces are required.
code 112/3808 Optional

Centering Attachment (Auto C&L)

As above, with additional adaptor for automatic C&L worktables.
code 112/2691 Optional



Accessories for Talyrond 385 series instruments

6 Glass hemisphere

For checking total system performance; UKAS calibration certificate is optional.
Roundness < 0.05µm (2µ")
code 112/436 Optional

7 Calibration set

For calibrating the gauge head. The set comprises a circular glass flat and four gauge blocks. UKAS calibration certificate is optional.
code 112/2889 Standard

8 Precision test cylinder

For checking the instrument's vertical straightness accuracy and parallelism of the vertical axis to the spindle axis. UKAS calibration certificate is optional.

300mm (11.8") cylinder

Roundness < 0.25µm (10µ")
Straightness < 0.5µm (20µ")*
code 112/1888 Optional

500mm (19.7") cylinder

Roundness < 0.25µm (10µ")
Straightness < 0.5µm (20µ")*
code 112/1997 Optional

1000mm (39.4") cylinder

Roundness < 0.75µm (30µ")
Straightness < 3µm (120µ")*
code 112/2333 Optional

*Straightness over central 90% of test cylinder length

9 Cresting standard

For checking the vertical and horizontal alignment of the gauge head.
code 112/1876 Optional

10 Flick standard

For rapid calibration of the gauge head sensitivity; alternative to the standard gauge calibration set.
20µm (788µ") range
code 112/2308 Optional
300µm (0.012") range
code 112/2233 Optional

11 Glass flat 250mm (10") diameter

For checking the straightness and alignment of the horizontal arm with respect to the spindle axis.
code 112/1998 Optional

Instrument Cover

To protect the instrument when not in use.
code 112/1393 Optional

Fuse and Bulb Kit

code 112/2131 Optional

Pre-Filter Element

code 112/3351 Optional

Accessory case

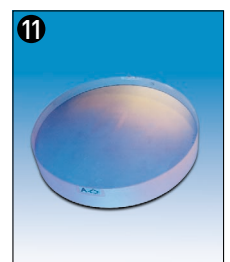
A useful case for carrying standard and optional accessories.
code 48/453 Optional

Set of hexagonal wrench keys

To assist with minor adjustments on the instrument.
code 630/412 Optional

Coalescing filter element

Secondary filter to be changed every 3 months to maintain a clear air supply, (1 included with the instrument).
code 112/3378 Optional



Customized solutions for special applications

Our strategy for success is simple, instead of just selling products, we provide solutions. If our standard instruments and accessories do not satisfy your needs, we can customize a solution to exactly match your application. This may include such things as work holding devices or special styli for applications such as small bores, shoulders or undercuts.

Specifications are subject to change without notice.