

Surtronic 25

This new edition of the long-standing Surtronic range brings a large display with the simplest of menu structures and the most up-to-date parameters. Its mechanical rigidity and styli have a firm reputation for giving reliable and repeatable surface finish measurements across a wide range of applications.

The Surtronic 25 is battery powered and offers total portability. The instrument can be used either freestanding (on horizontal, vertical or even inverted surfaces) or bench mounted with fixturing for batch measurement and laboratory applications.

This accurate and reliable instrument offers complete flexibility and simplicity:

- Parameter Options to suit your application
- Fast Measurement Cycle
- Intuitive Menu Structure
- Unique Stylus Lift Mechanism for total flexibility
- Long Traverse Length and extended Pick-up reach
- Comprehensive Range of Accessory & Pick-up options
- Powerful software option
- Worldwide technical support



All measured parameters are displayed simultaneously on the large LCD screen

Parameter Options to suit your application

The Surtronic 25 can calculate up to 10 parameters according to your measurement application:

Amplitude Parameters (measures the vertical characteristics of the surface deviations):

- Ra (Arithmetic Mean Deviation)
- Rsk (Skewness)
- Rz (Average peak to valley height)
- Rt (Total height of profile)
- Rp (Max profile peak height)
- Rz1max (Max peak to valley height)

Spacing Parameters (measures the horizontal characteristics of the surface deviations):

- RPc (Peak count)
- RSm (Mean width of profile elements)

Hybrid Parameters (combinations of spacing and amplitude parameters):

- Rmr (Material Ratio)
- Rda - R Delta a (Arithmetic Mean Slope)

The above parameters cover the most common requirements to check lubrication, feed rates, stresses, friction and wear properties. Additional parameters can be analysed with the addition of Talyprofile software (see page 4).

Fast Measurement Cycle

The Surtronic 25 incorporates the latest electronics for very fast analysis - results are calculated and displayed even before the traverse unit returns. This fast processing, combined with intuitive menu buttons, greatly reduces measurement cycles.

Intuitive Menu Structure

The Surtronic 25 incorporates a large LCD screen which allows full menu and measurement results to be displayed. Using only two buttons the user can scroll through the menus and make selections intuitively before pressing the MEASURE key.

All selections become the default for future measurements and are saved even if the instrument is powered down or "sleeping" to conserve power. The selection criteria and the measurement results are displayed clearly on the large LCD screen, ready to print or export to a PC.

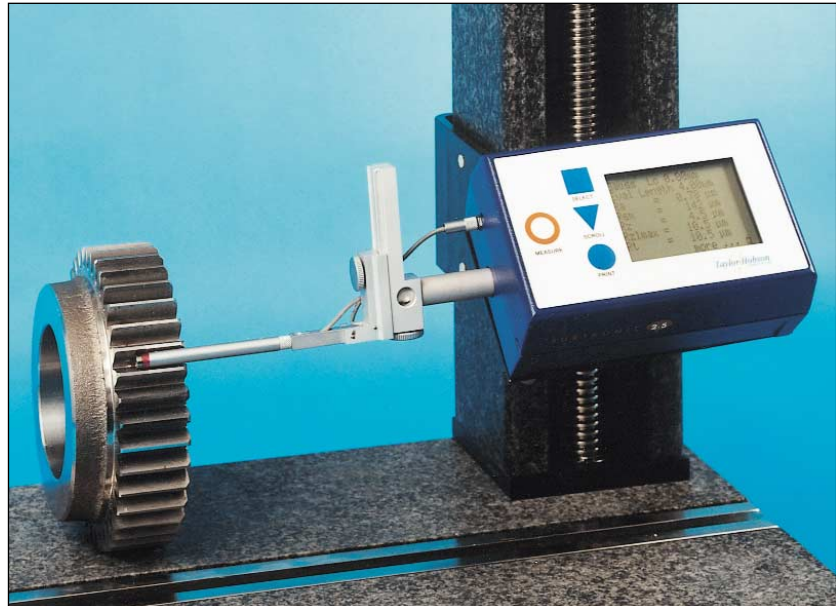
Unique Stylus Lift Mechanism

The Surtronic 25 has a uniquely engineered stylus lift mechanism which **allows a vertical adjustment of 50mm and rotation of the pick-up to different measuring positions, including right angle or inverted measurements.** These adjustments to the height and position of the gauge allow areas and features of a part to be easily measured without additional complex fixturing. This feature saves the operator a huge amount of set up time and allows total flexibility. Typical applications where the stylus lift is invaluable include the measurement of steps, bores, grooves and lands.



Long traverse length and extended Pick-up reach

The Surtronic 25 can traverse up to 25mm (or as little as 0.25mm) depending on your component. In addition, the stylus length and pick-up configuration give a long reach, making it **an ideal instrument for features such as large and narrow bores.** Optional extension rods extend the pick-up further (see accessories page).



Comprehensive Range of Accessories & Pick-ups

Taylor Hobson has developed an extensive range of pick-ups and accessories to suit the varied measurement needs of our customers. In addition to the pick-ups shown on page 6 our applications department regularly designs and manufactures pick-ups and fixturing for specific requirements.

The dimensions of the Surtronic 25 and the pick-ups available are all **fully compatible with existing Surtronic 3, 3P and 3+ instruments.**

Powerful Software Options

The Surtronic 25 includes an RS232 multi-function port which allows connection of a printer or export of measurement results to a PC for further analysis using the optional Talyprofile software (see next page). By setting the Surtronic 25 to 'Data Dump' mode, measurements and setup can be instigated directly from the Talyprofile software.



Surtronic 25

Talyprofile

Advanced surface finish analysis

Talyprofile is a dedicated software package designed for use with workshop or laboratory instruments.

Two versions are available.

Talyprofile "Lite" has all functions typically used for a shopfloor inspection. Talyprofile "Regular" has complete laboratory analysis functions:

Talyprofile features	Regular	Lite
Leveling	✓	✓
Symmetries	✓	✓
Zoom	✓	✓
Thresholding	✓	
Form removal	✓	
Erase defects	✓	
Filtering by FFT	✓	
Profile curves	✓	✓
Material Ratio curve	✓	✓
Interactive Mr curve	✓	✓
Fractal analysis	✓	
R & W Motifs (ISO 12085)	✓	
Rk Parameters	✓	
Rk Parameter curves	✓	
Distance measurement	✓	✓
Step height measurement	✓	
Area of a hole / peak	✓	✓
Frequency spectrum	✓	
Power spectrum density	✓	

✓ indicates availability in Regular or Lite version

Outstanding graphics

The software is visually advanced and provides clear on screen profile images. Talyprofile allows the user to take a basic measurement and create a full measurement report using the software's detailed analysis options and desktop publishing function (see screen displays opposite for examples).

In depth analysis

Profiles can be leveled and zoomed to remove unwanted features or defects from the analysis. Distance measurement between features and areas of a profile are easily implemented and the information can be displayed graphically and numerically. Step height and the area of a hole or peak can also be displayed.

Time-saving Analysis Templates

A 'template' can be created whereby a sequence of analysis functions can be saved and applied to future measurements, turning detailed reporting tasks into routine documents.

Desktop publishing facility

Talyprofile offers a comprehensive desk top publishing function which allows clear presentation of results measurements and profiles. Graphs, profiles and results can be arranged and printed from within the Talyprofile software or copied into other wordprocessing documents giving complete flexibility in reporting.

Full compatability

Surface finish results from other TaylorHobson surface roughness instruments can be imported to Talyprofile software, allowing a uniform report style to be used throughout your workshop or laboratory.

Talyprofile Parameters

Roughness parameters obtained by filtering: Ra, Rq, Rt, Rp, Ry, Rku, Rsk, RSm, Rz, RΔq, RTp, RHTp, Rlo, Rλq, RPC, RzJIS, R3z.

Waviness parameters obtained by filtering:

Wa, Wq, Wt, Wp, Wv, Wku, Wsk, WSm, Wz, WzJIS, Wλq, WΔq, WTP, WHTp, WLo, WPC, W3z.

(instruments with straightness datum)

Parameters on the raw profile

(unfiltered): Pa, Pq, Pt, Pp, Pv, Pku, Psk, PSm, Pz, PΔq, Pλq, PTP, PHTp, PLo, PPC.

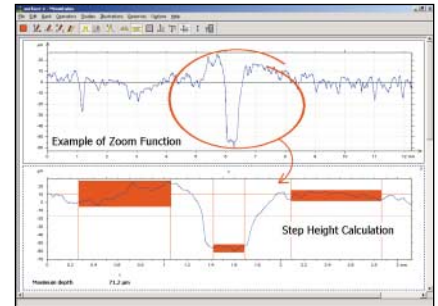
Parameters obtained by double

filtering (DIN 4776): Rk, Rpk, Rvk, MR1, MR2, A1, A2, Rpk, Rvk (only with regular version)

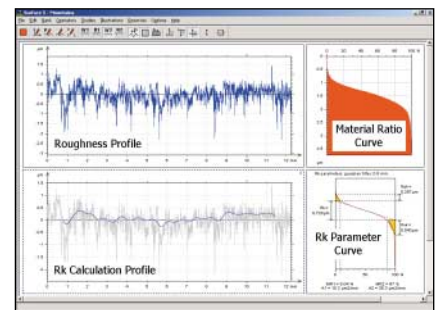
Parameters obtained by the motifs

method ("R&W"): R, AR, Pt, Rx, SR, SAR, Nr, Kr, W, AW, Wte, Wx, SW, SAW, Nw, Kw, Rke, Rpke, Rvke, Trc, HTrc.

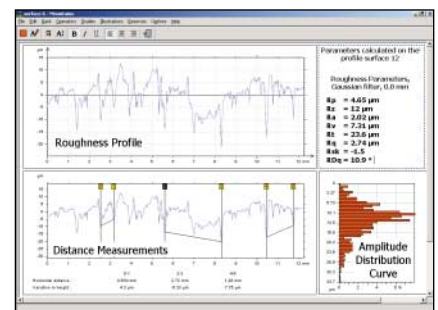
(only with regular version)



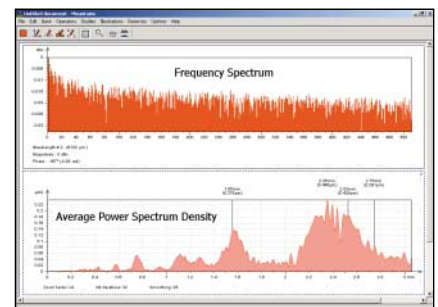
step height calculation and zoom function



example of Rk and material ratio curves



parameter calculations and distance measurements



analysis by means of frequency and power spectrums

Surtronic Accessories

1 Precision Vice

code 112/2694-01

High quality precision vice ideal for holding finished components.
Jaw width 70mm, jaw opening 80mm

2 Thermal Printer

code B112/3469-01

Outputs measuring conditions such as cut-off, traverse length, filter and parameter results, plus optional graph.

3 Support Stand

code 112/1517

With swivel platform for rotation and tilting to keep the pick-up traverse parallel to the surface.

4 Roll and Bore Fixture

code 112/1509

This fixture allows the Surtronic 25 to be mounted on cylindrical components.

5 Datum Support Stand

code 112/865

Provides an independent straight datum when used with pick-ups fitted with the detachable skid.

6 Detachable Skid

code 112/1191

Clamped to the pick-up body, this accessory is required for use with the Datum Support Stand.

7 Ball Joint Vice

code 112/2695-01

Comprising a surface mounted swivel base and a wide jaw vice. Suitable for holding irregular shaped components.

Overall length 280mm

Jaw Width 54mm

Jaw Opening 160mm

8 Pick-up Lift

code 112/1525

For lifting the stylus clear of the workpiece to prevent the arm falling and damaging the surface or stylus.

9 Portable Base

code 137/1734

Provides a support when used on machine tool applications.

Column and Stand (see page 3)

code 112/2693

Granite base (400x250mm) and manually operated column with adjustment height of 260mm.

Mains Adaptor

code US -110V - B112/1594

UK -240V -112/1551

Euro-230V -112/1595 (2 pin)

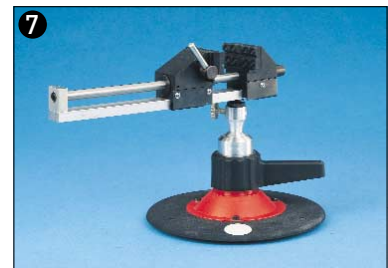
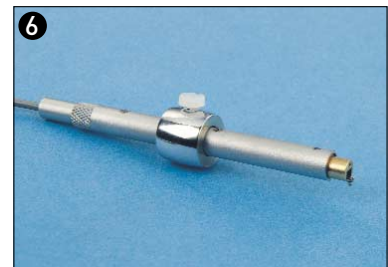
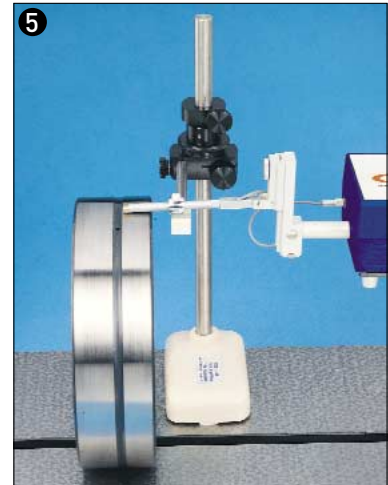
Enables instrument to be powered from the mains supply.

Extension Rod

code 112/1533 100mm length

112/1510 200mm length

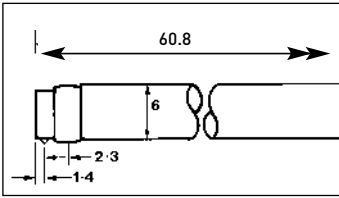
Provides extension to pick-up for measurements in deep holes.
Longer extension rods can be made to order.



Surtronic 25

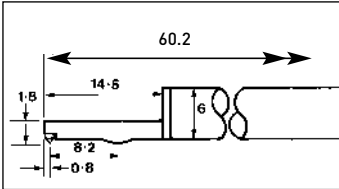
Pick-Ups

Taylor Hobson has developed an extensive range of pick-ups to suit the varied measurement needs of our customers. In addition to the pick-ups shown below our applications department regularly designs and manufactures pick-ups for specific requirements.



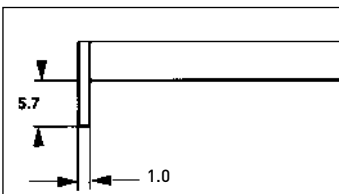
Standard Pick-up code 112/1502

For general surface roughness measurement. Also available with 10 μ m (400 μ in) tip radius. (code 112/1503)



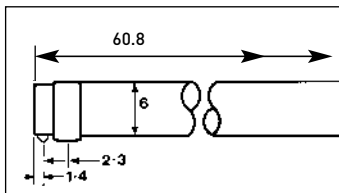
Small Bore Pick-up code 112/1504

For general use in small bores, grooves and on narrow surfaces. 2 μ m tip radius version is also available (code 112/2673).



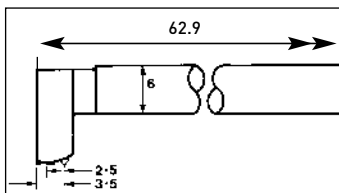
Narrow Gauge Stylus code 155/P11610

For measuring in 'O' rings and narrow grooves up to a depth of 5.5mm (0.22in).



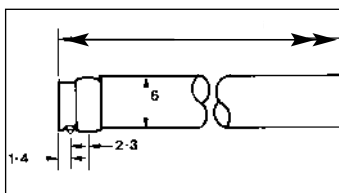
Right Angle Pick-up code 112/1505

For measurement at right angles to the direction of traverse.



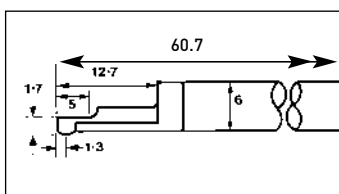
Recess Pick-up code 112/1506

For recesses to a depth of 5.7mm (0.23in). A 2 μ m tip radius version is available (code 112/2672). [Also available for 25mm depth.]



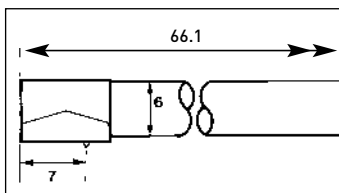
Chisel Edge Pick-up code 112/1524

For measuring along sharp edges or wire. Not for use on flat surfaces.



Side Skid Pick-up code 112/1531

For use on curved surfaces such as gear teeth.



Shoe Pick-up code 112/1599

For measuring rougher surfaces, particularly with the 2.5mm (0.1in) cut-off.

Specifications

Pick-up	
Gauge range	300 μ m (0.012in)
Resolution	0.01 μ m (0.04 μ in)
Accuracy	2% of reading + LSD μ m
Pick up type	Inductive
Gauge force	150-300mg
Diamond stylus	Tip radius 5 μ m (200 μ in) unless otherwise specified
Instrument	
Cut off value	0.25, 0.8, 2.5, 8mm (0.01, 0.03, 0.1, 0.3in)
Filter	2CR or gaussian (selectable)
Traverse length	0.25-25mm (0.01-0.98in)
Traverse speed	1mm/sec (0.04in/sec)
Display units	μ m / μ in
Data output	RS232
Power	9V battery or mains (optional)
Parameters	
Ra, Rz, Rt, Rp, Rmr, Rpc, Rsm, Rz1max, Rsk, Rda	
Dimensions	
Overall dimensions	127x85x60mm (5x3.35x2.4in)
Weight	450gm (1Lb)
Nominal operating conditions	
Temperature	5-40°C (41-104°F)
Humidity	0 to 80% non condensing
Storage conditions	
Temperature	0 to 50°C (32°F to 122°F)
Humidity	0 to 80% non condensing
Taylor Hobson pursues a policy of continual improvements due to technical development in all their instruments. We therefore reserve the right to depart from catalogue specifications.	

The Surtronic 25 System Includes:

- Display and Traverse Unit
- Pick-up and Diamond Stylus
- Calibration Standard
- Carrying Case
- Battery
- Handbook

Other Taylor Hobson Products

Surtronic Duo

Roughness only

Surtronic Duo measures Ra or Rz at the touch of a button and shows the result on a large LCD window.

Optional additional parameters Rp, Rv and Rt can be displayed and units of measure switched between inch and metric without re-measuring the part.

- Skidded pick-up with 5µm (200µin) stylus tip
- 0.8mm (0.03in) cut-off
- Self-contained, battery operation for shop floor use

Talysurf CLI 2000

Roughness, waviness and form

3D or 2D surface profiling systems for high resolution mapping of texture, topography and shape

- High speed scanning capability up to 10mm/sec (0.40in/sec)
- Non-contact laser gauge and/or inductive stylus gauge for ultimate versatility
- Talymap software provides comprehensive analysis and outstanding graphical display
- Completely programmable for automatic, unattended inspection and analysis routines

Talyrond 265

Automated roundness geometry system

- Modular concept - choose from a range of 8 products
- Powerful control and analysis provided by µltra Roundness software
- Automatic centering and leveling capabilities for rapid component set-up

The Talyrond 265 is part of a comprehensive range of roundness geometry systems available from Taylor Hobson.

Form Talysurf Intra

Roughness, waviness and form

Low cost, portable system for high level surface finish analysis in the manufacturing shop

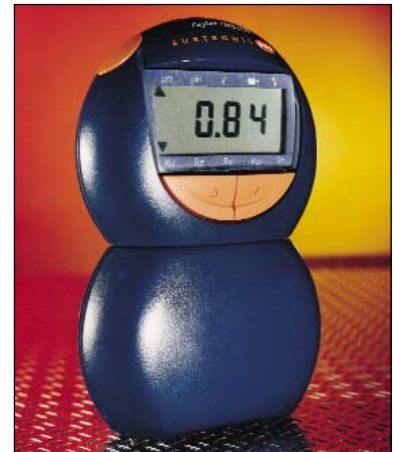
- Skidless pick-up with 2µm (80µin) stylus tip
- 50mm (1.97in) traverse with straightness datum
- Colour VGA touch screen control panel for simple operation and high visibility display
- Automatic calibration over a sphere ensures that radius and form measurements are correct

Form Talysurf Series

Roughness, waviness and form

Modular product line for high level surface finish analysis to suit a wide range of applications and budgets

- 50mm (1.97in) or 120mm (4.72in) traverse with straightness datum
- Inductive gauge with 1mm (0.040in) range and interchangeable stylus arms for small bores, grooves and other difficult features
- Ultra software takes charge of all hardware/software/analysis functions for seamless operation
- Programmable for automatic inspection and analysis routines



Surtronic Duo



Talysurf CLI (detail of X - Y traverse stage)



Form Talysurf Intra



Talyrond roundness measuring instrument

At Taylor Hobson we don't sell products - we provide solutions. Whatever our customers' measuring needs, we will find a solution to meet them.

Our reputation for excellence is based on more than 100 years of metrology design and manufacturing experience. Add to this our worldwide coverage, our after sales support and our commitment to customer care and you have a company which provides its customers with total peace of mind.

The Taylor Hobson service:

Special applications

We have a team of engineers who provide a design service for dedicated metrology solutions. This can involve customising standard Taylor Hobson instruments to meet specific requirements or designing unique products.

For details of your local support center phone **+44 116 246 3034** or e-mail sales@taylor-hobson.com

After sales support

To ensure that all our products are maintained to the standards you require, we offer a range of after sales service packages. They include an on-site calibration service, field service and a refit and upgrade service.

We also offer an instrument calibration service at our UKAS laboratory in Leicester.

For details of your local support center phone **+44 116 246 3135** or email service@taylor-hobson.com

Spectrum Metrology

Customers with measurement needs often require not only equipment but also advice on solving a specific manufacturing or measurement problem. Spectrum Metrology provides rapid technical and application support via phone, fax & e-mail. A full demonstration facility is available at Spectrum Metrology's demonstration room.

Spectrum Metrology can be contacted on

Tel: +44 116 235 8355

Fax: +44 116 235 8344

E-mail: sales@spectrum-metrology.co.uk

Internet: www.spectrum-metrology.co.uk

Unit 15 Barshaw Park, Leycroft Road, Beaumont Leys
Leicester, LE4 1ET, England



Taylor Hobson SA

6 avenue de Norvège, Hightec 4
91953 Courtaboeuf Cedex, France
Tel: +33 160 92 14 14 Fax: +33 160 92 10 20
e-mail: contact@taylor-hobson.fr



Taylor Hobson GmbH

Postfach 4827, Kreuzberger Ring 6
65205 Wiesbaden, Germany
Tel: +49 611 973040 Fax: +49 611 97304600
e-mail: info@taylor-hobson.de



Taylor Hobson S.p.A.

S.p. 28 Vigentina 6,
20090 Opera, Milan, Italy
Tel: +39 0257 606424 Fax: +39 0257 606740
e-mail: mail@taylor-hobson.it



Taylor Hobson KK

Sankyo Meguro Building 4-5-37,
Kamiosaki Shinagawaku, Tokyo 141-0021, Japan
Tel: +81 33494 5110 Fax: +81 33494 5119
e-mail: mail-box@taylor-hobson.co.jp



Taylor Hobson K INC

Hungkuk Life Building, 5th Floor 6-7 Soonae Dong
Pundang-Ku, Seongnam, Kyungki-Do, 463-020, Korea
Tel: +82 31 713 1371 Fax: +82 31 713 1372
e-mail: thkorea@kornet.net



Taylor Hobson China Office

20/F, Delta House, 3 On Yiu Street
Shatin, New Territories, Hong Kong
Tel: +852 2757 3033 Fax: +852 2757 1767
e-mail: talhobhk@netvigator.com



Taylor Hobson Inc

2100 Golf Road, Suite 350
Rolling Meadows, Illinois 60008-4231, USA
Tel: +1 847 290 8090 Fax: +1 847 290 1430
e-mail: sales@taylorhobson.us



PO Box 36, 2 New Star Road
Leicester, LE4 9JQ, England
Tel: +44 116 276 3771 Fax: +44 116 246 0579
e-mail: sales@taylor-hobson.com
Internet: www.taylor-hobson.com



a division of

AMETEK

S25 2E SCP 09/04